

South Burlington School District
September 27, 2019

To: School Board Members

From: David Young

Re: Superintendent's Report – October 2, 2019 School Board Meeting
Policy 2.9 – Communication and Support to the Board

Enrollment Update

The enrollment numbers in the attached documents contain some updates to those supplied to Elizabeth Fitzgerald and shared with *The Other Paper* for the September 12 edition. The discrepancies between the numbers reported to *The Other Paper* are:

1. This year's total enrollment reported in the attached documents is 2,493, not 2,523 as shared with *The Other Paper*. The higher number erroneously included out-of-district students at all grade levels.
2. Last year's total enrollment was 2,475, not 2,389 as shared with the paper. The erroneous number was due to a transposition in the table given to *The Other Paper*.

Residential Enrollment changes by school:

Chamberlin = 2.9% Increase over last year

RMCS = 4.8% Increase over last year

Orchard = 6.8% Increase over last year

Elementary overall = 5.1% Increase over last year

Frederick H. Tuttle Middle School = -1.6% Decrease from last year
(includes both residential and tuition students)

The 9 student decrease in the middle school is due to a small incoming grade 6 compared to last year while both grade 7 and grade 8 added students to their cohort this year.

SB High School Total = -2.3% Decrease in both residential and tuition students from last year

SB High School Resident = -1.7% Decrease from last year

SB High School Tuition = -4.9% Decrease from last year

The 22 student decrease in the high school is mostly due to a freshman class that was ~10 students smaller than the four that preceded it. In addition to that, each cohort lost some students after last year. Looking to next year, the freshman class is expected to be 10 to 20 students larger than the largest freshman class in the last four years based on an examination of the incoming cohort and the CropperGIS/McKibben Demographic projections for grade 9 in 2020-21.

The current district-wide enrollment is therefore an increase of 0.7% over last year, not the 5.2% reported to the paper.

This rate of increase is more consistent with the growth predicted by CropperGIS/McKibben Demographics in their April 2019 report, who predict an average annual increase of 1.2% in the district over the next five years and an average annual increase of 0.7% in the five years that follow. The CropperGIS/McKibben Demographics predictions are based on some demographic rates that have the potential to manifest across all grades (local in-migration and emigration rates) and is not strictly dependent on demographic rates that produce ever-increasing early education enrollments (local birth rate). Our district appears to be seeing the pattern predicted by the demographer play out, where growth occurs in both early education and elementary enrollment simultaneously. This is stated in point two of the executive summary to the CropperGIS/McKibben Demographics report, where "Most in-migration to the district continues to occur in the 0- to 9- and 25- to 44-year-old age groups." These are families moving into the district with students of elementary school age or moving into the district and immediately starting families. Within the next five to ten years the predictions suggest that these increased enrollments will be apparent in all grade levels in the district, adding as many as 246 students to the total enrollment by the end of ten years compared to today's enrollment.

SBSD Enrollment Summary

Jon Katz

September 25, 2019

Contents

| | |
|--|----|
| District Summary | 2 |
| Rick Marcotte Central School | 6 |
| Chamberlin School | 8 |
| Orchard School | 10 |
| Frederick H. Tuttle Middle School | 12 |
| South Burlington High School | 14 |
| Cohort Transitions | 16 |
| Out-of-District Placements | 18 |
| Pre-Kindergarten Enrollment | 18 |
| Recap: All Students Served By The District | 19 |

NOTES

All enrollment counts prior to and including 2018-19 are from internal records recorded for a fall census on or around November 1. Enrollment for 2019-20 are queried directly from the district's student information system and cross-checked against counts by each school's principal. Enrollment for 2019-20 was counted during the second week of school, on September 10, 2019.

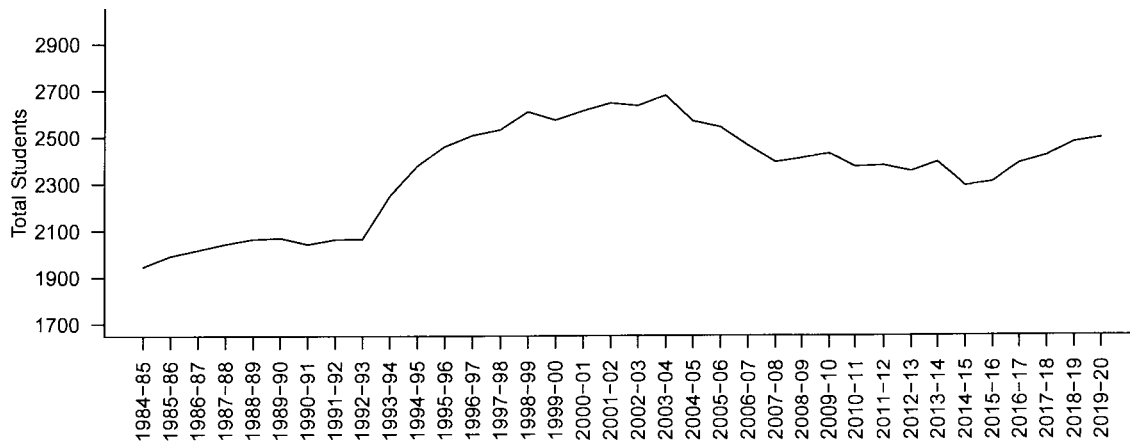
District Summary

The 36 years of enrollment in the following plots and table include both resident students and tuition/school choice students. These two categories are separated for the middle school and high school later in this report. Beginning with the 2019-20 year all totals include students enrolled full time in early college. These students are split out in the high school section. Students who are in out-of-district special education programs are not included in any of the totals, but are included in a separate section. The same is true for all preschool students.

2019-20: The Numbers

- 2,841 students are being served by the district this year. This includes resident students, tuition students, pre-kindergarten students in and outside of the three public elementary schools, and students placed in special education programs outside of the district.
- 2,573 students are in a district classroom on any given day. This includes pre-kindergarten students at the three elementary schools as well as resident and tuition students at all schools.
- 2,493 students in grades K-12, including resident and tuition students.
- 0.7% growth in grades K-12 since the prior year. This is 3.7% growth over five-years if it remains constant. For context, the most recent five years saw enrollment grow by 8.9%, an average of 1.7% annually.

District-wide Enrollment



Change in district enrollment from the prior year. Change is calculated based on the total enrollment, which includes both resident and tuition/school choice students.

Change in District Enrollment From Prior Year

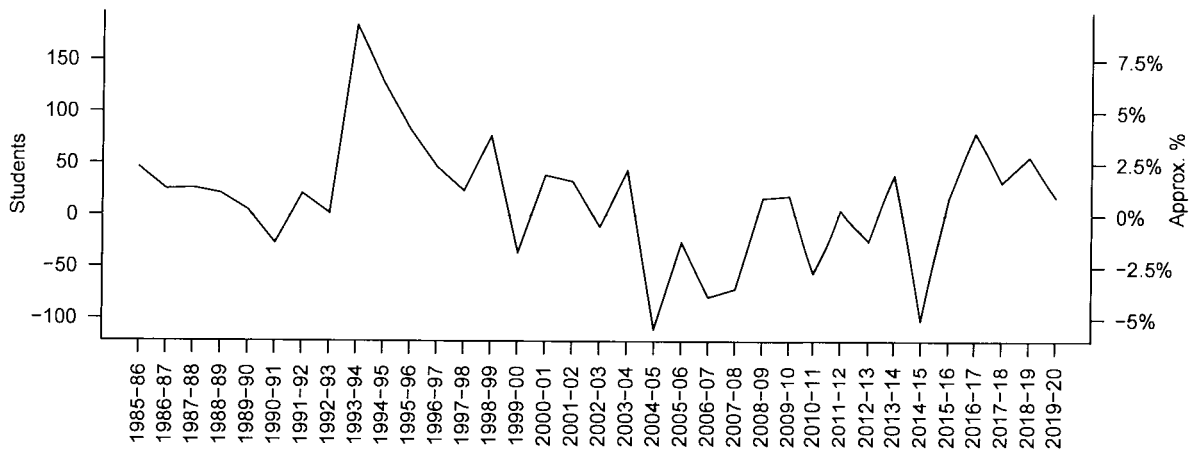
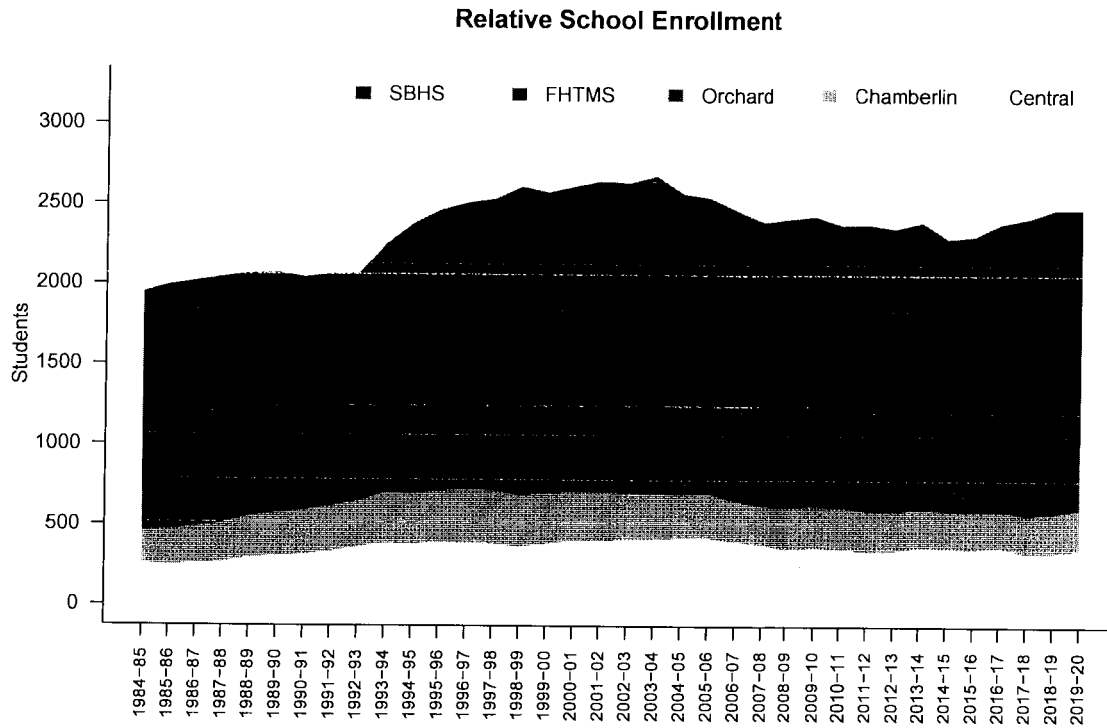


Table 1: Number of students in each grade during each year, with total district enrollment for each year at right. This table includes both resident and tuition/school choice students.

| | K | 1 | 2 | 3 | 4 | 5 | 6 | 7 | 8 | 9 | 10 | 11 | 12 | Total |
|----------------|----------|----------|----------|----------|----------|----------|----------|----------|----------|----------|-----------|-----------|-----------|--------------|
| 1984-85 | 120 | 106 | 105 | 120 | 112 | 132 | 138 | 159 | 177 | 185 | 198 | 187 | 207 | 1946 |
| 1985-86 | 118 | 136 | 125 | 103 | 125 | 122 | 149 | 149 | 167 | 200 | 199 | 210 | 189 | 1992 |
| 1986-87 | 112 | 141 | 123 | 128 | 110 | 137 | 146 | 159 | 159 | 205 | 200 | 196 | 201 | 2017 |
| 1987-88 | 135 | 127 | 138 | 136 | 132 | 121 | 143 | 152 | 178 | 179 | 209 | 207 | 186 | 2043 |
| 1988-89 | 133 | 149 | 132 | 141 | 133 | 135 | 132 | 164 | 150 | 207 | 182 | 207 | 199 | 2064 |
| 1989-90 | 156 | 140 | 151 | 124 | 143 | 138 | 148 | 134 | 158 | 174 | 204 | 186 | 213 | 2069 |
| 1990-91 | 141 | 165 | 144 | 155 | 129 | 147 | 146 | 150 | 137 | 177 | 177 | 199 | 175 | 2042 |
| 1991-92 | 138 | 164 | 169 | 147 | 145 | 142 | 138 | 141 | 159 | 169 | 176 | 179 | 196 | 2063 |
| 1992-93 | 153 | 138 | 175 | 165 | 149 | 150 | 143 | 144 | 139 | 205 | 167 | 175 | 162 | 2065 |
| 1993-94 | 171 | 171 | 160 | 185 | 168 | 169 | 160 | 156 | 165 | 179 | 219 | 174 | 172 | 2249 |
| 1994-95 | 182 | 175 | 182 | 170 | 189 | 180 | 163 | 169 | 146 | 233 | 190 | 224 | 175 | 2378 |
| 1995-96 | 179 | 197 | 185 | 190 | 182 | 190 | 176 | 177 | 165 | 193 | 219 | 186 | 222 | 2461 |
| 1996-97 | 176 | 194 | 204 | 183 | 192 | 179 | 198 | 178 | 189 | 246 | 203 | 197 | 169 | 2508 |
| 1997-98 | 159 | 182 | 208 | 205 | 187 | 201 | 181 | 198 | 184 | 235 | 214 | 187 | 191 | 2532 |
| 1998-99 | 198 | 170 | 188 | 215 | 209 | 199 | 209 | 184 | 207 | 239 | 209 | 207 | 175 | 2609 |
| 1999-00 | 155 | 180 | 167 | 181 | 209 | 204 | 200 | 207 | 183 | 259 | 219 | 209 | 200 | 2573 |
| 2000-01 | 159 | 157 | 182 | 166 | 187 | 218 | 212 | 209 | 211 | 284 | 215 | 213 | 199 | 2612 |
| 2001-02 | 171 | 172 | 163 | 191 | 173 | 189 | 231 | 217 | 211 | 274 | 245 | 207 | 201 | 2645 |
| 2002-03 | 150 | 170 | 175 | 165 | 197 | 174 | 205 | 230 | 233 | 242 | 234 | 256 | 203 | 2634 |
| 2003-04 | 167 | 164 | 178 | 180 | 176 | 194 | 190 | 220 | 224 | 266 | 237 | 239 | 243 | 2678 |
| 2004-05 | 162 | 163 | 175 | 176 | 179 | 180 | 197 | 186 | 205 | 250 | 248 | 234 | 213 | 2568 |
| 2005-06 | 180 | 160 | 167 | 170 | 181 | 177 | 182 | 206 | 191 | 216 | 251 | 245 | 216 | 2542 |
| 2006-07 | 134 | 177 | 168 | 163 | 165 | 182 | 177 | 174 | 208 | 211 | 211 | 250 | 243 | 2463 |
| 2007-08 | 159 | 133 | 179 | 165 | 159 | 164 | 181 | 183 | 180 | 229 | 208 | 221 | 231 | 2392 |
| 2008-09 | 155 | 170 | 142 | 181 | 168 | 160 | 166 | 185 | 182 | 224 | 236 | 213 | 227 | 2409 |
| 2009-10 | 148 | 150 | 168 | 157 | 193 | 165 | 170 | 174 | 191 | 216 | 224 | 251 | 221 | 2428 |
| 2010-11 | 148 | 154 | 150 | 175 | 153 | 195 | 173 | 169 | 174 | 199 | 211 | 222 | 249 | 2372 |
| 2011-12 | 161 | 150 | 161 | 152 | 183 | 157 | 194 | 169 | 172 | 214 | 219 | 214 | 231 | 2377 |
| 2012-13 | 157 | 159 | 149 | 164 | 145 | 185 | 162 | 196 | 171 | 218 | 213 | 216 | 217 | 2352 |
| 2013-14 | 148 | 172 | 166 | 157 | 160 | 155 | 190 | 161 | 208 | 209 | 219 | 227 | 219 | 2391 |
| 2014-15 | 149 | 146 | 169 | 164 | 156 | 171 | 155 | 191 | 157 | 214 | 202 | 207 | 208 | 2289 |
| 2015-16 | 148 | 156 | 141 | 169 | 169 | 161 | 168 | 151 | 193 | 201 | 228 | 207 | 214 | 2306 |
| 2016-17 | 167 | 155 | 157 | 146 | 152 | 193 | 162 | 186 | 181 | 243 | 205 | 230 | 209 | 2386 |
| 2017-18 | 150 | 167 | 161 | 140 | 145 | 186 | 189 | 175 | 186 | 223 | 257 | 209 | 230 | 2418 |
| 2018-19 | 169 | 160 | 170 | 168 | 142 | 152 | 186 | 209 | 178 | 239 | 233 | 256 | 213 | 2475 |
| 2019-20 | 185 | 171 | 165 | 174 | 170 | 145 | 158 | 189 | 217 | 217 | 235 | 224 | 243 | 2493 |

This stacked area plots illustrates the number of students in each school or grade for each year. The top of the areas are cumulative, so the top of the darkest color indicates the total enrollment. It is easier to compare the relative widths of each color band at each year rather than absolute numbers. These figures include both resident and tuition/school choice students.



Rick Marcotte Central School

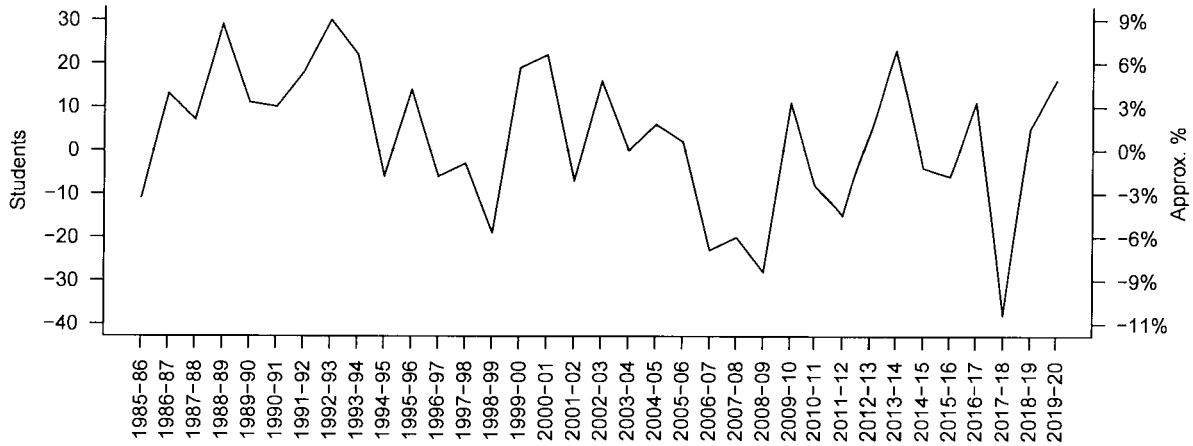
Table 2: Number of students at Rick Marcotte Central School in each grade during each year, with total school enrollment for each year at right.

| | K | 1 | 2 | 3 | 4 | 5 | Total |
|----------------|----------|----------|----------|----------|----------|----------|--------------|
| 1984-85 | 44 | 40 | 37 | 44 | 39 | 51 | 255 |
| 1985-86 | 37 | 48 | 45 | 34 | 40 | 40 | 244 |
| 1986-87 | 35 | 43 | 46 | 49 | 36 | 48 | 257 |
| 1987-88 | 40 | 46 | 44 | 50 | 45 | 39 | 264 |
| 1988-89 | 47 | 51 | 48 | 48 | 48 | 51 | 293 |
| 1989-90 | 55 | 51 | 54 | 48 | 43 | 53 | 304 |
| 1990-91 | 55 | 59 | 52 | 57 | 46 | 45 | 314 |
| 1991-92 | 44 | 65 | 62 | 53 | 56 | 52 | 332 |
| 1992-93 | 65 | 49 | 70 | 62 | 58 | 58 | 362 |
| 1993-94 | 57 | 78 | 48 | 75 | 63 | 63 | 384 |
| 1994-95 | 48 | 60 | 83 | 49 | 74 | 64 | 378 |
| 1995-96 | 58 | 55 | 66 | 83 | 60 | 70 | 392 |
| 1996-97 | 54 | 62 | 59 | 67 | 82 | 62 | 386 |
| 1997-98 | 50 | 55 | 64 | 60 | 68 | 86 | 383 |
| 1998-99 | 61 | 52 | 53 | 68 | 60 | 70 | 364 |
| 1999-00 | 54 | 64 | 59 | 63 | 80 | 63 | 383 |
| 2000-01 | 54 | 57 | 66 | 66 | 73 | 89 | 405 |
| 2001-02 | 63 | 67 | 59 | 73 | 67 | 69 | 398 |
| 2002-03 | 61 | 66 | 71 | 62 | 80 | 74 | 414 |
| 2003-04 | 61 | 65 | 68 | 75 | 65 | 80 | 414 |
| 2004-05 | 70 | 63 | 72 | 74 | 75 | 66 | 420 |
| 2005-06 | 76 | 65 | 58 | 73 | 76 | 74 | 422 |
| 2006-07 | 53 | 69 | 70 | 58 | 72 | 77 | 399 |
| 2007-08 | 57 | 53 | 69 | 68 | 60 | 72 | 379 |
| 2008-09 | 50 | 55 | 51 | 72 | 65 | 58 | 351 |
| 2009-10 | 51 | 57 | 55 | 60 | 74 | 65 | 362 |
| 2010-11 | 51 | 55 | 57 | 58 | 55 | 78 | 354 |
| 2011-12 | 52 | 45 | 58 | 60 | 66 | 58 | 339 |
| 2012-13 | 46 | 57 | 46 | 64 | 62 | 68 | 343 |
| 2013-14 | 64 | 55 | 64 | 57 | 62 | 64 | 366 |
| 2014-15 | 55 | 66 | 50 | 69 | 56 | 66 | 362 |
| 2015-16 | 46 | 59 | 62 | 54 | 76 | 59 | 356 |
| 2016-17 | 63 | 43 | 60 | 63 | 60 | 78 | 367 |
| 2017-18 | 44 | 62 | 47 | 56 | 64 | 56 | 329 |
| 2018-19 | 55 | 49 | 61 | 50 | 57 | 62 | 334 |
| 2019-20 | 59 | 57 | 56 | 65 | 54 | 59 | 350 |

RMCS Enrollment



RMCS Change in Enrollment From Prior Year

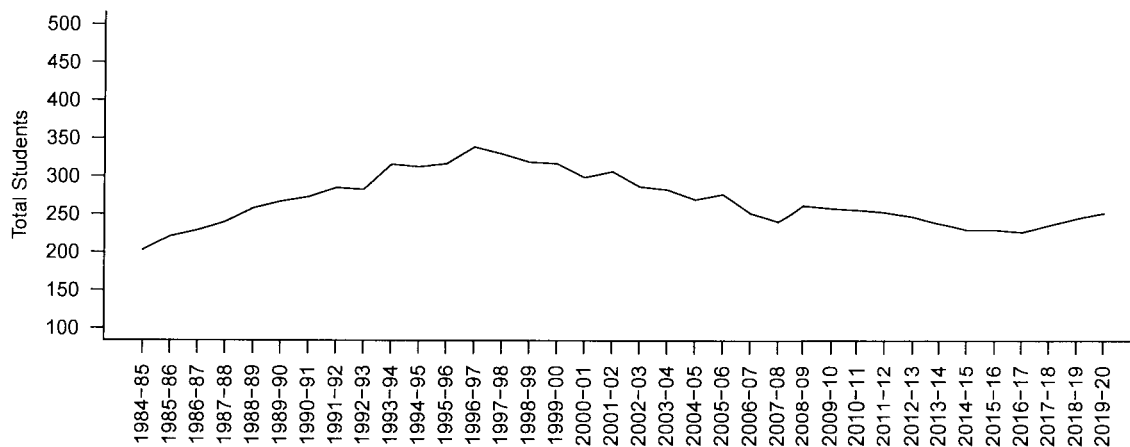


Chamberlin School

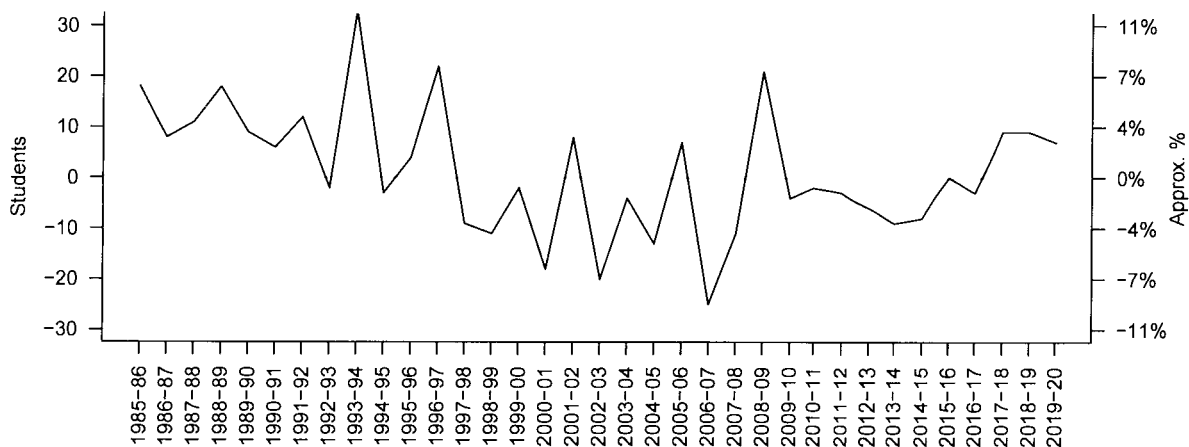
Table 3: Number of students at Chamberlin School in each grade during each year, with total school enrollment for each year at right.

| | K | 1 | 2 | 3 | 4 | 5 | Total |
|----------------|----------|----------|----------|----------|----------|----------|--------------|
| 1984-85 | 36 | 30 | 38 | 38 | 30 | 31 | 203 |
| 1985-86 | 41 | 42 | 30 | 34 | 41 | 33 | 221 |
| 1986-87 | 41 | 46 | 37 | 28 | 38 | 39 | 229 |
| 1987-88 | 46 | 40 | 43 | 38 | 31 | 42 | 240 |
| 1988-89 | 47 | 51 | 45 | 43 | 40 | 32 | 258 |
| 1989-90 | 49 | 48 | 44 | 41 | 45 | 40 | 267 |
| 1990-91 | 39 | 51 | 47 | 42 | 45 | 49 | 273 |
| 1991-92 | 55 | 45 | 53 | 48 | 36 | 48 | 285 |
| 1992-93 | 49 | 49 | 48 | 50 | 48 | 39 | 283 |
| 1993-94 | 58 | 52 | 58 | 48 | 48 | 52 | 316 |
| 1994-95 | 51 | 51 | 53 | 60 | 48 | 50 | 313 |
| 1995-96 | 54 | 48 | 55 | 54 | 60 | 46 | 317 |
| 1996-97 | 58 | 60 | 56 | 55 | 52 | 58 | 339 |
| 1997-98 | 47 | 61 | 60 | 55 | 51 | 56 | 330 |
| 1998-99 | 56 | 43 | 56 | 58 | 55 | 51 | 319 |
| 1999-00 | 49 | 54 | 45 | 57 | 58 | 54 | 317 |
| 2000-01 | 42 | 43 | 58 | 47 | 53 | 56 | 299 |
| 2001-02 | 48 | 42 | 49 | 57 | 52 | 59 | 307 |
| 2002-03 | 39 | 45 | 46 | 48 | 60 | 49 | 287 |
| 2003-04 | 44 | 39 | 48 | 48 | 47 | 57 | 283 |
| 2004-05 | 50 | 44 | 42 | 40 | 44 | 50 | 270 |
| 2005-06 | 50 | 54 | 49 | 42 | 42 | 40 | 277 |
| 2006-07 | 29 | 49 | 48 | 46 | 38 | 42 | 252 |
| 2007-08 | 43 | 27 | 44 | 46 | 44 | 37 | 241 |
| 2008-09 | 42 | 54 | 32 | 44 | 44 | 46 | 262 |
| 2009-10 | 43 | 38 | 51 | 35 | 46 | 45 | 258 |
| 2010-11 | 46 | 39 | 40 | 53 | 33 | 45 | 256 |
| 2011-12 | 46 | 46 | 36 | 38 | 49 | 38 | 253 |
| 2012-13 | 50 | 40 | 46 | 32 | 34 | 45 | 247 |
| 2013-14 | 33 | 51 | 43 | 42 | 31 | 38 | 238 |
| 2014-15 | 29 | 32 | 49 | 37 | 45 | 38 | 230 |
| 2015-16 | 44 | 30 | 34 | 43 | 33 | 46 | 230 |
| 2016-17 | 40 | 44 | 29 | 35 | 45 | 34 | 227 |
| 2017-18 | 38 | 42 | 46 | 27 | 34 | 49 | 236 |
| 2018-19 | 45 | 39 | 42 | 51 | 27 | 41 | 245 |
| 2019-20 | 45 | 48 | 38 | 43 | 51 | 27 | 252 |

Chamberlin School Enrollment



Chamberlin Change in Enrollment From Prior Year

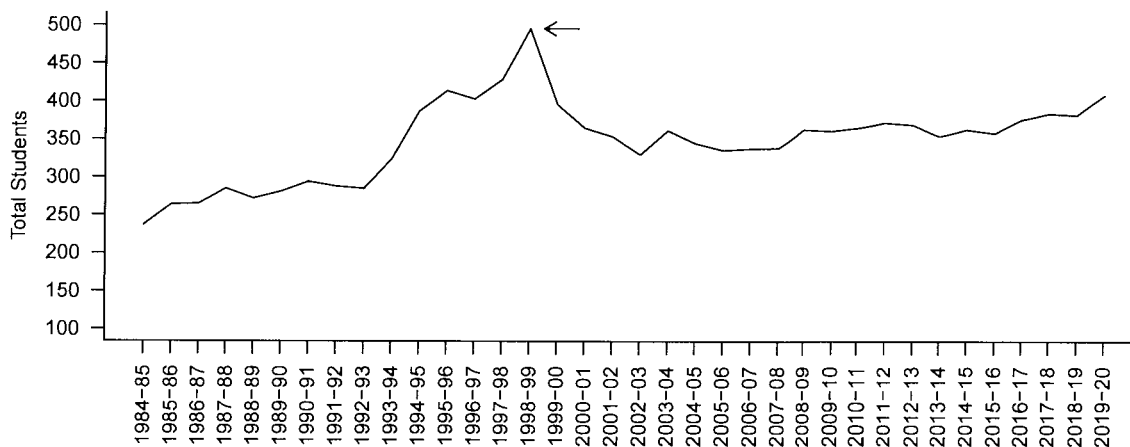


Orchard School

Table 4: Number of students at Orchard School in each grade during each year, with total school enrollment for each year at right.

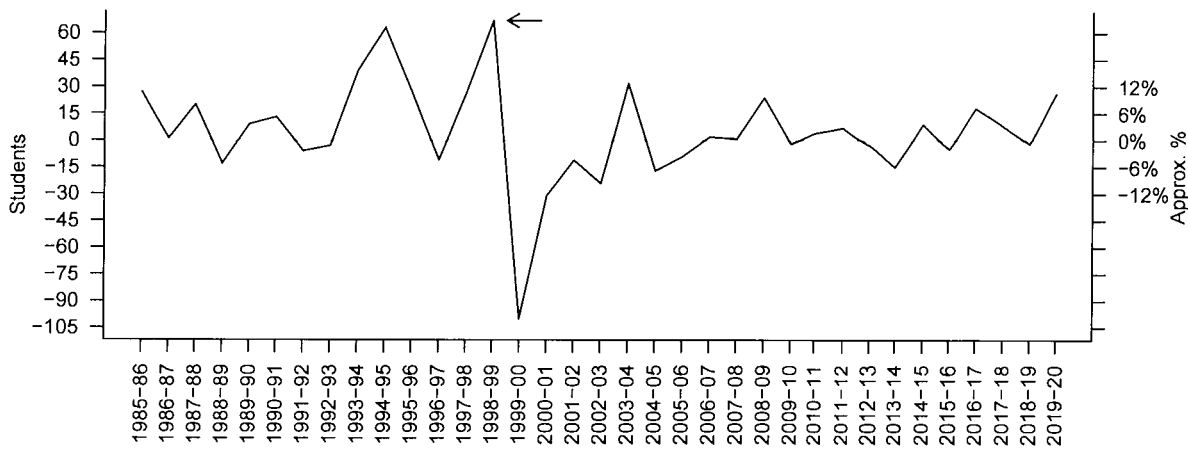
| | K | 1 | 2 | 3 | 4 | 5 | Total |
|----------------|----------|----------|----------|----------|----------|----------|--------------|
| 1984-85 | 40 | 36 | 30 | 38 | 43 | 50 | 237 |
| 1985-86 | 40 | 46 | 50 | 35 | 44 | 49 | 264 |
| 1986-87 | 36 | 52 | 40 | 51 | 36 | 50 | 265 |
| 1987-88 | 49 | 41 | 51 | 48 | 56 | 40 | 285 |
| 1988-89 | 39 | 47 | 39 | 50 | 45 | 52 | 272 |
| 1989-90 | 52 | 41 | 53 | 35 | 55 | 45 | 281 |
| 1990-91 | 47 | 55 | 45 | 56 | 38 | 53 | 294 |
| 1991-92 | 39 | 54 | 54 | 46 | 53 | 42 | 288 |
| 1992-93 | 39 | 40 | 57 | 53 | 43 | 53 | 285 |
| 1993-94 | 56 | 41 | 54 | 62 | 57 | 54 | 324 |
| 1994-95 | 83 | 64 | 46 | 61 | 67 | 66 | 387 |
| 1995-96 | 67 | 94 | 64 | 53 | 62 | 74 | 414 |
| 1996-97 | 64 | 72 | 89 | 61 | 58 | 59 | 403 |
| 1997-98 | 62 | 66 | 84 | 90 | 68 | 59 | 429 |
| 1998-99 | 81 | 75 | 79 | 89 | 94 | 78 | 496 |
| 1999-00 | 52 | 62 | 63 | 61 | 71 | 87 | 396 |
| 2000-01 | 63 | 57 | 58 | 53 | 61 | 73 | 365 |
| 2001-02 | 60 | 63 | 55 | 61 | 54 | 61 | 354 |
| 2002-03 | 50 | 59 | 58 | 55 | 57 | 51 | 330 |
| 2003-04 | 62 | 60 | 62 | 57 | 64 | 57 | 362 |
| 2004-05 | 42 | 56 | 61 | 62 | 60 | 64 | 345 |
| 2005-06 | 54 | 41 | 60 | 55 | 63 | 63 | 336 |
| 2006-07 | 52 | 59 | 50 | 59 | 55 | 63 | 338 |
| 2007-08 | 59 | 53 | 66 | 51 | 55 | 55 | 339 |
| 2008-09 | 63 | 61 | 59 | 65 | 59 | 56 | 363 |
| 2009-10 | 54 | 55 | 62 | 62 | 73 | 55 | 361 |
| 2010-11 | 51 | 60 | 53 | 64 | 65 | 72 | 365 |
| 2011-12 | 63 | 59 | 67 | 54 | 68 | 61 | 372 |
| 2012-13 | 61 | 62 | 57 | 68 | 49 | 72 | 369 |
| 2013-14 | 51 | 66 | 59 | 58 | 67 | 53 | 354 |
| 2014-15 | 65 | 48 | 70 | 58 | 55 | 67 | 363 |
| 2015-16 | 58 | 67 | 45 | 72 | 60 | 56 | 358 |
| 2016-17 | 64 | 68 | 68 | 48 | 47 | 81 | 376 |
| 2017-18 | 68 | 63 | 68 | 57 | 47 | 81 | 384 |
| 2018-19 | 69 | 72 | 67 | 67 | 58 | 49 | 382 |
| 2019-20 | 81 | 66 | 71 | 66 | 65 | 59 | 408 |

Orchard School Enrollment



In 1998-99 the internal district boundaries were redrawn to distribute students more evenly among elementary schools within the district. This redistricting appears on these plots as a steep decline in enrollment. 1998-99 is indicated on the plots above and below with an arrow.

Orchard School Change in Enrollment From Prior Year



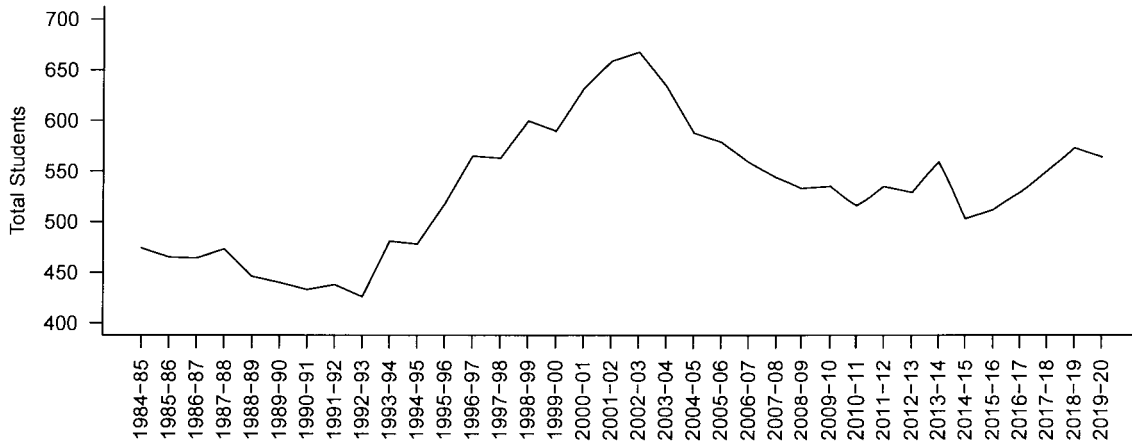
Frederick H. Tuttle Middle School

All figures for FHTMS include both resident students and tuition/school choice students.

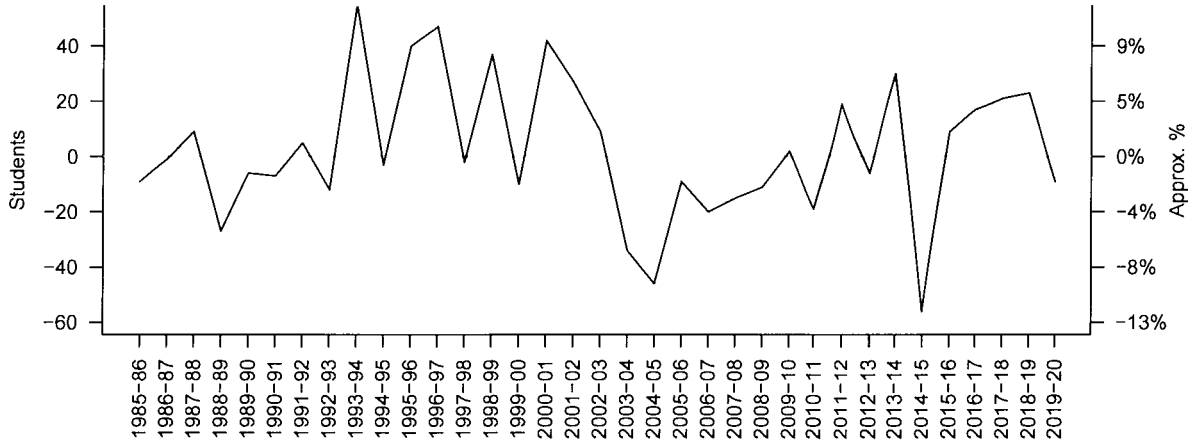
Table 5: Number of students at Frederick H. Tuttle Middle School in each grade during each year, with total school enrollment for each year at right. All numbers include both resident students and tuition/school choice students, which are also included as a separate column for the two most recent years.

| | 6 | 7 | 8 | Tuition | Total |
|----------------|----------|----------|----------|----------------|--------------|
| 1984-85 | 138 | 159 | 177 | | 474 |
| 1985-86 | 149 | 149 | 167 | | 465 |
| 1986-87 | 146 | 159 | 159 | | 464 |
| 1987-88 | 143 | 152 | 178 | | 473 |
| 1988-89 | 132 | 164 | 150 | | 446 |
| 1989-90 | 148 | 134 | 158 | | 440 |
| 1990-91 | 146 | 150 | 137 | | 433 |
| 1991-92 | 138 | 141 | 159 | | 438 |
| 1992-93 | 143 | 144 | 139 | | 426 |
| 1993-94 | 160 | 156 | 165 | | 481 |
| 1994-95 | 163 | 169 | 146 | | 478 |
| 1995-96 | 176 | 177 | 165 | | 518 |
| 1996-97 | 198 | 178 | 189 | | 565 |
| 1997-98 | 181 | 198 | 184 | | 563 |
| 1998-99 | 209 | 184 | 207 | | 600 |
| 1999-00 | 200 | 207 | 183 | | 590 |
| 2000-01 | 212 | 209 | 211 | | 632 |
| 2001-02 | 231 | 217 | 211 | | 659 |
| 2002-03 | 205 | 230 | 233 | | 668 |
| 2003-04 | 190 | 220 | 224 | | 634 |
| 2004-05 | 197 | 186 | 205 | | 588 |
| 2005-06 | 182 | 206 | 191 | | 579 |
| 2006-07 | 177 | 174 | 208 | | 559 |
| 2007-08 | 181 | 183 | 180 | | 544 |
| 2008-09 | 166 | 185 | 182 | | 533 |
| 2009-10 | 170 | 174 | 191 | | 535 |
| 2010-11 | 173 | 169 | 174 | | 516 |
| 2011-12 | 194 | 169 | 172 | | 535 |
| 2012-13 | 162 | 196 | 171 | | 529 |
| 2013-14 | 190 | 161 | 208 | | 559 |
| 2014-15 | 155 | 191 | 157 | | 503 |
| 2015-16 | 168 | 151 | 193 | | 512 |
| 2016-17 | 162 | 186 | 181 | | 529 |
| 2017-18 | 189 | 175 | 186 | | 550 |
| 2018-19 | 186 | 209 | 178 | 4 | 573 |
| 2019-20 | 158 | 189 | 217 | 12 | 564 |

FHTMS Enrollment



FHTMS Change in Enrollment From Prior Year



South Burlington High School

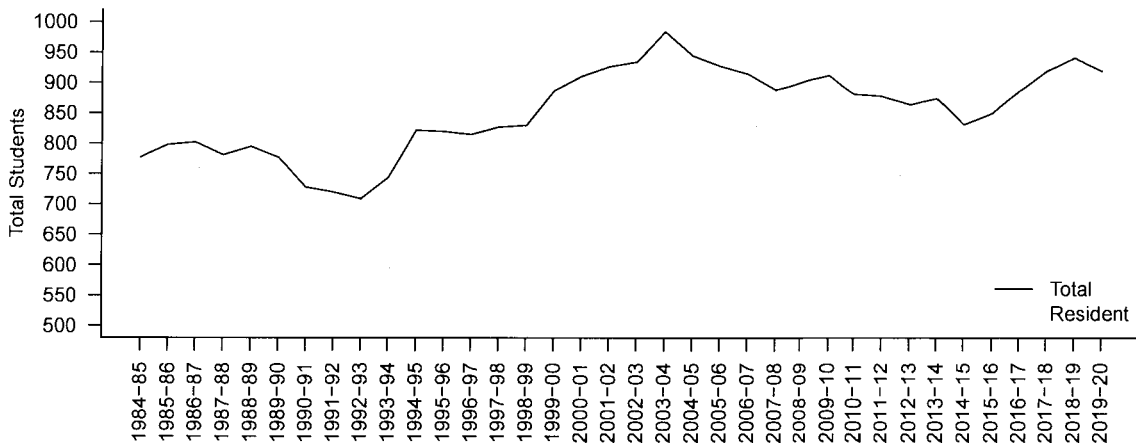
The enrollment in the following plots show both total enrollment and enrollment of resident students, with tuition/school choice students making up the difference. Beginning with the 2019-2020 year, students enrolled full time in early college for both semesters are presented in a separate column¹. These students are not technically enrolled in South Burlington High School, but they will re-enroll to graduate with their cohort and are eligible to play school sports and use school guidance resources.

Table 6: Total enrollment at South Burlington High School in each grade during each year including tuition/school choice students. The 'Total' column is the sum of the number of tuition students and resident students. Early college students are included in the 12th grade column.

| | 9 | 10 | 11 | 12 | Early College | Tuition | Resident | Total |
|---------|-----|-----|-----|-----|---------------|---------|----------|-------|
| 1984-85 | 185 | 198 | 187 | 207 | | 16 | 761 | 777 |
| 1985-86 | 200 | 199 | 210 | 189 | | 30 | 768 | 798 |
| 1986-87 | 205 | 200 | 196 | 201 | | 37 | 765 | 802 |
| 1987-88 | 179 | 209 | 207 | 186 | | 49 | 732 | 781 |
| 1988-89 | 207 | 182 | 207 | 199 | | 60 | 735 | 795 |
| 1989-90 | 174 | 204 | 186 | 213 | | 70 | 707 | 777 |
| 1990-91 | 177 | 177 | 199 | 175 | | 78 | 650 | 728 |
| 1991-92 | 169 | 176 | 179 | 196 | | 106 | 614 | 720 |
| 1992-93 | 205 | 167 | 175 | 162 | | 119 | 590 | 709 |
| 1993-94 | 179 | 219 | 174 | 172 | | 151 | 593 | 744 |
| 1994-95 | 233 | 190 | 224 | 175 | | 188 | 634 | 822 |
| 1995-96 | 193 | 219 | 186 | 222 | | 201 | 619 | 820 |
| 1996-97 | 246 | 203 | 197 | 169 | | 175 | 640 | 815 |
| 1997-98 | 235 | 214 | 187 | 191 | | 150 | 677 | 827 |
| 1998-99 | 239 | 209 | 207 | 175 | | 137 | 693 | 830 |
| 1999-00 | 259 | 219 | 209 | 200 | | 156 | 731 | 887 |
| 2000-01 | 284 | 215 | 213 | 199 | | 149 | 762 | 911 |
| 2001-02 | 274 | 245 | 207 | 201 | | 138 | 789 | 927 |
| 2002-03 | 242 | 234 | 256 | 203 | | 123 | 812 | 935 |
| 2003-04 | 266 | 237 | 239 | 243 | | 111 | 874 | 985 |
| 2004-05 | 250 | 248 | 234 | 213 | | 87 | 858 | 945 |
| 2005-06 | 216 | 251 | 245 | 216 | | 73 | 855 | 928 |
| 2006-07 | 211 | 211 | 250 | 243 | | 71 | 844 | 915 |
| 2007-08 | 229 | 208 | 221 | 231 | | 95 | 794 | 889 |
| 2008-09 | 224 | 236 | 213 | 227 | | 109 | 791 | 900 |
| 2009-10 | 216 | 224 | 251 | 221 | | 138 | 774 | 912 |
| 2010-11 | 199 | 211 | 222 | 249 | | 117 | 764 | 881 |
| 2011-12 | 214 | 219 | 214 | 231 | | 121 | 757 | 878 |
| 2012-13 | 218 | 213 | 216 | 217 | | 123 | 741 | 864 |
| 2013-14 | 209 | 219 | 227 | 219 | | 110 | 764 | 874 |
| 2014-15 | 214 | 202 | 207 | 208 | | 115 | 716 | 831 |
| 2015-16 | 201 | 228 | 207 | 214 | | 137 | 713 | 850 |
| 2016-17 | 243 | 205 | 230 | 209 | | 152 | 735 | 887 |
| 2017-18 | 223 | 257 | 209 | 230 | | 163 | 756 | 919 |
| 2018-19 | 239 | 233 | 256 | 213 | | 185 | 756 | 941 |
| 2019-20 | 217 | 235 | 224 | 243 | 18 | 176 | 743 | 919 |

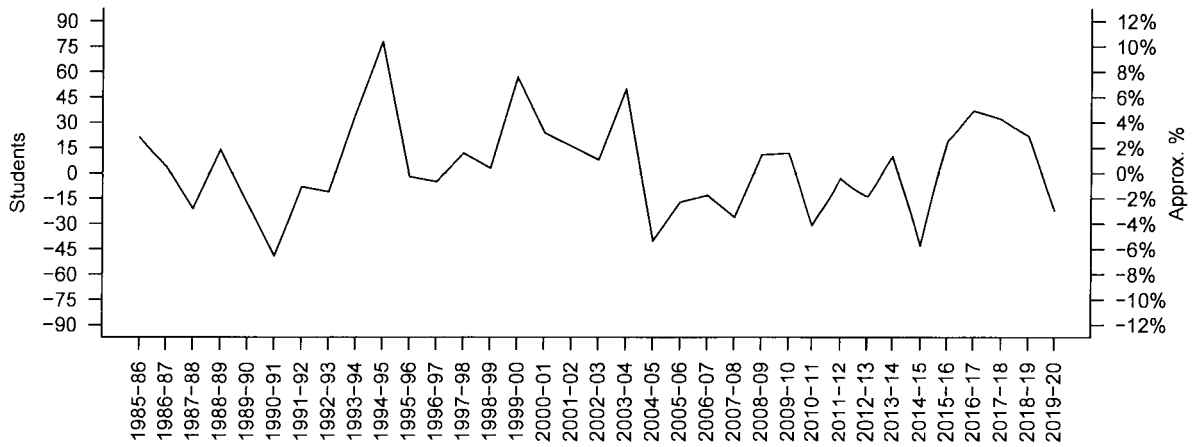
¹Full time is defined by the college, usually 12 credit hours per semester or equivalent. In 2019-20 colleges include Community College of Vermont (17 students) and Norwich University (1 student).

SBHS Enrollment



In the plot above, “Total” students include resident and tuition/school choice students. The vertical space between the “Resident” line and the Total line visually indicates the number of tuition/school choice students.

SBHS Change in Total Enrollment From Prior Year



Cohort Transitions

The plot below compares the current graduating cohort (black line) to the two most-recent past (solid gray lines) and future (dashed lines) cohorts. This plot and the table that follow include all students, both resident and tuition/school choice.

Cohort Size By Grade, Compared to Past and Future Cohorts

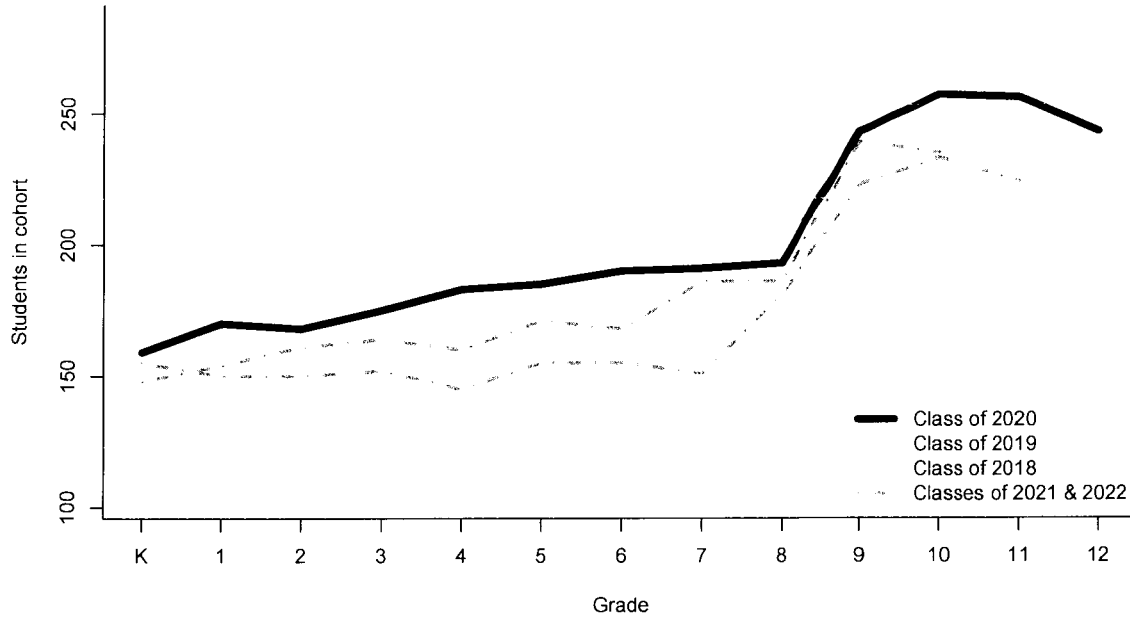


Table 7: Cohorts aligned in rows. Each cell contains the number of students in that cohort when it was the grade indicated by the column. This table includes all students, both resident and tuition/school choice.

| | K | 1 | 2 | 3 | 4 | 5 | 6 | 7 | 8 | 9 | 10 | 11 | 12 |
|---------------|-----|-----|-----|-----|-----|-----|-----|-----|-----|-----|-----|-----|-----|
| Class of 1985 | | | | | | | | | | | | | 207 |
| Class of 1986 | | | | | | | | | | | | 187 | 189 |
| Class of 1987 | | | | | | | | | | 198 | 210 | 201 | |
| Class of 1988 | | | | | | | | | 185 | 199 | 196 | 186 | |
| Class of 1989 | | | | | | | | 177 | 200 | 200 | 207 | 199 | |
| Class of 1990 | | | | | | | 159 | 167 | 205 | 209 | 207 | 213 | |
| Class of 1991 | | | | | | 138 | 149 | 159 | 178 | 207 | 182 | 186 | 175 |
| Class of 1992 | | | | | 132 | 149 | 159 | 178 | 207 | 204 | 199 | 196 | |
| Class of 1993 | | | | 112 | 122 | 146 | 152 | 150 | 174 | 177 | 179 | 162 | |
| Class of 1994 | | | 120 | 125 | 137 | 143 | 164 | 158 | 177 | 176 | 175 | 172 | |
| Class of 1995 | | 105 | 103 | 110 | 121 | 132 | 134 | 137 | 169 | 167 | 174 | 175 | |
| Class of 1996 | 106 | 125 | 128 | 132 | 135 | 148 | 150 | 159 | 205 | 219 | 224 | 222 | |
| Class of 1997 | 120 | 136 | 123 | 136 | 133 | 138 | 146 | 141 | 139 | 179 | 190 | 186 | 169 |
| Class of 1998 | 118 | 141 | 138 | 141 | 143 | 147 | 138 | 144 | 165 | 233 | 219 | 197 | 191 |
| Class of 1999 | 112 | 127 | 132 | 124 | 129 | 142 | 143 | 156 | 146 | 193 | 203 | 187 | 175 |
| Class of 2000 | 135 | 149 | 151 | 155 | 145 | 150 | 160 | 169 | 165 | 246 | 214 | 207 | 200 |
| Class of 2001 | 133 | 140 | 144 | 147 | 149 | 169 | 163 | 177 | 189 | 235 | 209 | 209 | 199 |
| Class of 2002 | 156 | 165 | 169 | 165 | 168 | 180 | 176 | 178 | 184 | 239 | 219 | 213 | 201 |
| Class of 2003 | 141 | 164 | 175 | 185 | 189 | 190 | 198 | 198 | 207 | 259 | 215 | 207 | 203 |
| Class of 2004 | 138 | 138 | 160 | 170 | 182 | 179 | 181 | 184 | 183 | 284 | 245 | 256 | 243 |
| Class of 2005 | 153 | 171 | 182 | 190 | 192 | 201 | 209 | 207 | 211 | 274 | 234 | 239 | 213 |
| Class of 2006 | 171 | 175 | 185 | 183 | 187 | 199 | 200 | 209 | 211 | 242 | 237 | 234 | 216 |
| Class of 2007 | 182 | 197 | 204 | 205 | 209 | 204 | 212 | 217 | 233 | 266 | 248 | 245 | 243 |
| Class of 2008 | 179 | 194 | 208 | 215 | 209 | 218 | 231 | 230 | 224 | 250 | 251 | 250 | 231 |
| Class of 2009 | 176 | 182 | 188 | 181 | 187 | 189 | 205 | 220 | 205 | 216 | 211 | 221 | 227 |
| Class of 2010 | 159 | 170 | 167 | 166 | 173 | 174 | 190 | 186 | 191 | 211 | 208 | 213 | 221 |
| Class of 2011 | 198 | 180 | 182 | 191 | 197 | 194 | 197 | 206 | 208 | 229 | 236 | 251 | 249 |
| Class of 2012 | 155 | 157 | 163 | 165 | 176 | 180 | 182 | 174 | 180 | 224 | 224 | 222 | 231 |
| Class of 2013 | 159 | 172 | 175 | 180 | 179 | 177 | 177 | 183 | 182 | 216 | 211 | 214 | 217 |
| Class of 2014 | 171 | 170 | 178 | 176 | 181 | 182 | 181 | 185 | 191 | 199 | 219 | 216 | 219 |
| Class of 2015 | 150 | 164 | 175 | 170 | 165 | 164 | 166 | 174 | 174 | 214 | 213 | 227 | 208 |
| Class of 2016 | 167 | 163 | 167 | 163 | 159 | 160 | 170 | 169 | 172 | 218 | 219 | 207 | 214 |
| Class of 2017 | 162 | 160 | 168 | 165 | 168 | 165 | 173 | 169 | 171 | 209 | 202 | 207 | 209 |
| Class of 2018 | 180 | 177 | 179 | 181 | 193 | 195 | 194 | 196 | 208 | 214 | 228 | 230 | 230 |
| Class of 2019 | 134 | 133 | 142 | 157 | 153 | 157 | 162 | 161 | 157 | 201 | 205 | 209 | 213 |
| Class of 2020 | 159 | 170 | 168 | 175 | 183 | 185 | 190 | 191 | 193 | 243 | 257 | 256 | 243 |
| Class of 2021 | 155 | 150 | 150 | 152 | 145 | 155 | 155 | 151 | 181 | 223 | 233 | 224 | |
| Class of 2022 | 148 | 154 | 161 | 164 | 160 | 171 | 168 | 186 | 186 | 239 | 235 | | |
| Class of 2023 | 148 | 150 | 149 | 157 | 156 | 161 | 162 | 175 | 178 | 217 | | | |
| Class of 2024 | 161 | 159 | 166 | 164 | 169 | 193 | 189 | 209 | 217 | | | | |
| Class of 2025 | 157 | 172 | 169 | 169 | 152 | 186 | 186 | 189 | | | | | |
| Class of 2026 | 148 | 146 | 141 | 146 | 145 | 152 | 158 | | | | | | |
| Class of 2027 | 149 | 156 | 157 | 140 | 142 | 145 | | | | | | | |
| Class of 2028 | 148 | 155 | 161 | 168 | 170 | | | | | | | | |
| Class of 2029 | 167 | 167 | 170 | 174 | | | | | | | | | |
| Class of 2030 | 150 | 160 | 165 | | | | | | | | | | |
| Class of 2031 | 169 | 171 | | | | | | | | | | | |
| Class of 2032 | 185 | | | | | | | | | | | | |

Out-of-District Placements

In 2019-20 the district assisted 27 students in grades K-12 find full-time placement in external special education programs.

Pre-Kindergarten Enrollment

In addition to Pre-K students within the elementary schools, the district partners with several private preschools in the area and serves as the liason between them and the State of Vermont Agency of Education.

Table 8: Number of Pre-K students in the school district. These students attend class in one of the SBSB early education classrooms, which are now located in each of the three elementary schools.

| | <u>Age 3</u> | <u>Age 4</u> |
|----------------|--------------|--------------|
| <u>2019-20</u> | 42 | 38 |

Table 9: Number of Pre-K students in early education partner programs. These are external programs.

| | <u>Age 3</u> | <u>Age 4</u> |
|----------------|--------------|--------------|
| <u>2019-20</u> | 115 | 126 |

Recap: All Students Served By The District

Table 10: All 2,841 students served by the district in 2019-20. All of these students appear in previous tables.

| | In District | OOD Placement | EE Partner Programs |
|--------------|--------------------|----------------------|----------------------------|
| PK3 | 42 | | 115 |
| PK4 | 38 | | 126 |
| K | 185 | | |
| 1 | 171 | | |
| 2 | 165 | | |
| 3 | 174 | | |
| 4 | 170 | | |
| 5 | 145 | | |
| 6 | 158 | | |
| 7 | 189 | | |
| 8 | 217 | | |
| 9 | 217 | | |
| 10 | 235 | | |
| 11 | 224 | | |
| 12 | 243 | | |
| Total | 2573 | 27 | 241 |

SBSD Enrollment Projections

From Cropper GIS/McKibben Demographics, Nov. 2017 and Apr. 2019

Jon Katz

September 25, 2019

Contents

| | |
|--|----------|
| District Summary | 2 |
| Rick Marcotte Central School | 3 |
| Chamberlin School | 4 |
| Orchard School | 5 |
| Frederick H. Tuttle Middle School | 6 |
| South Burlington High School | 7 |

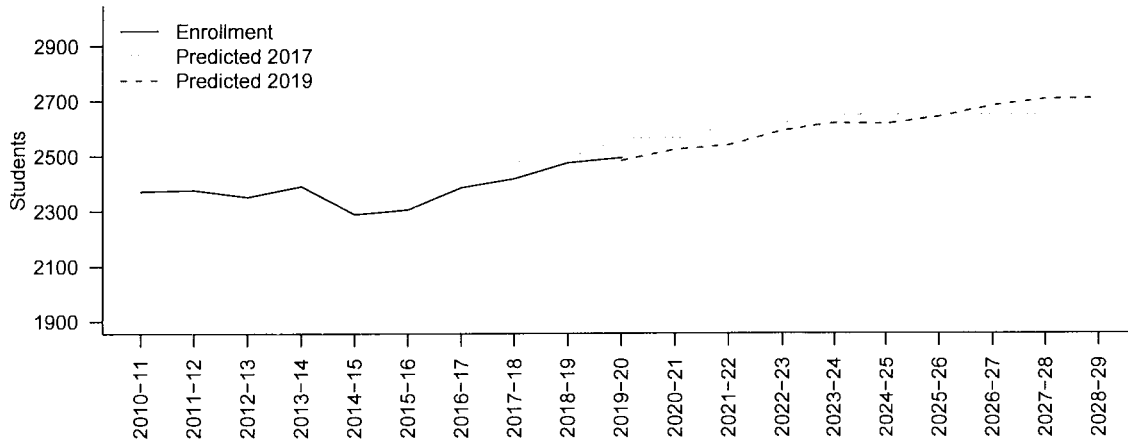
District Summary

Enrollment in this figure and table include resident and tuition/school choice students. These are separated out only for the high school.

Table 1: Total enrollment compared to predicted enrollment.

| Year | Enrollment | Predicted 2017 | Error | Predicted 2019 | Error |
|---------|------------|----------------|-----------|----------------|------------|
| 2010-11 | 2372 | | | | |
| 2011-12 | 2377 | | | | |
| 2012-13 | 2352 | | | | |
| 2013-14 | 2391 | | | | |
| 2014-15 | 2289 | | | | |
| 2015-16 | 2306 | | | | |
| 2016-17 | 2386 | | | | |
| 2017-18 | 2418 | 2484 | 66 (2.7%) | | |
| 2018-19 | 2475 | 2498 | 23 (0.9%) | | |
| 2019-20 | 2493 | 2560 | 67 (2.7%) | 2483 | -10 (0.4%) |
| 2020-21 | | 2566 | | 2523 | |
| 2021-22 | | 2608 | | 2539 | |
| 2022-23 | | 2621 | | 2591 | |
| 2023-24 | | 2646 | | 2618 | |
| 2024-25 | | 2658 | | 2615 | |
| 2025-26 | | 2636 | | 2641 | |
| 2026-27 | | 2647 | | 2681 | |
| 2027-28 | | 2652 | | 2705 | |
| 2028-29 | | | | 2708 | |

District-wide Enrollment

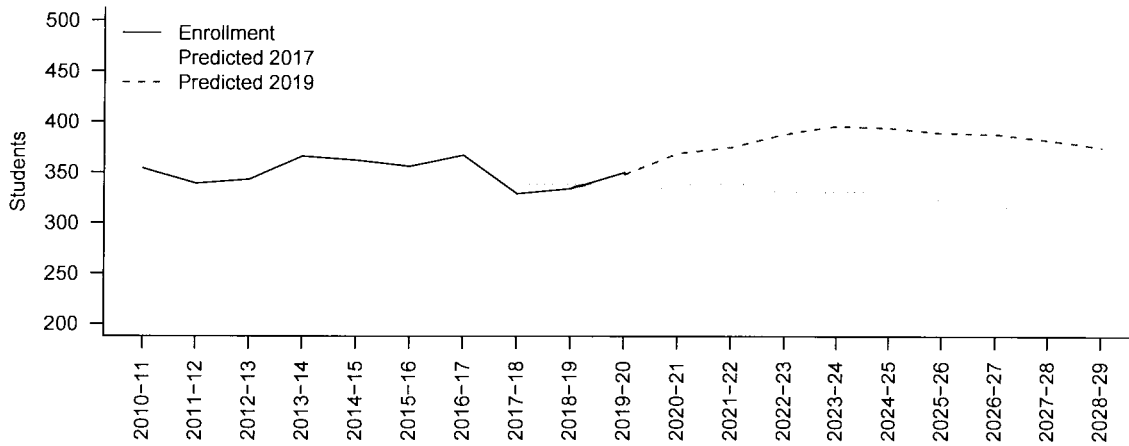


Rick Marcotte Central School

Table 2: Total enrollment compared to predicted enrollment.

| Year | Enrollment | Predicted 2017 | Error | Predicted 2019 | Error |
|---------|------------|----------------|------------|----------------|-----------|
| 2010-11 | 354 | | | | |
| 2011-12 | 339 | | | | |
| 2012-13 | 343 | | | | |
| 2013-14 | 366 | | | | |
| 2014-15 | 362 | | | | |
| 2015-16 | 356 | | | | |
| 2016-17 | 367 | | | | |
| 2017-18 | 329 | 339 | 10 (3%) | | |
| 2018-19 | 334 | 338 | 4 (1.2%) | | |
| 2019-20 | 350 | 334 | -16 (4.6%) | 348 | -2 (0.6%) |
| 2020-21 | | 336 | | 369 | |
| 2021-22 | | 341 | | 375 | |
| 2022-23 | | 329 | | 388 | |
| 2023-24 | | 330 | | 396 | |
| 2024-25 | | 330 | | 394 | |
| 2025-26 | | 323 | | 389 | |
| 2026-27 | | 317 | | 388 | |
| 2027-28 | | 311 | | 382 | |
| 2028-29 | | | | 375 | |

RMCS Enrollment

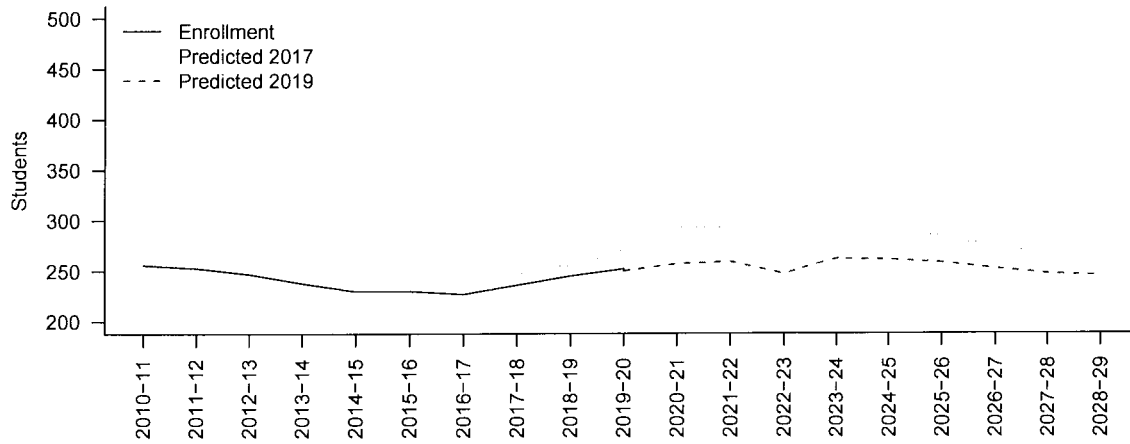


Chamberlin School

Table 3: Total enrollment compared to predicted enrollment.

| Year | Enrollment | Predicted 2017 | Error | Predicted 2019 | Error |
|---------|------------|----------------|-----------|----------------|-----------|
| 2010-11 | 256 | | | | |
| 2011-12 | 253 | | | | |
| 2012-13 | 247 | | | | |
| 2013-14 | 238 | | | | |
| 2014-15 | 230 | | | | |
| 2015-16 | 230 | | | | |
| 2016-17 | 227 | | | | |
| 2017-18 | 236 | 248 | 12 (5.1%) | | |
| 2018-19 | 245 | 256 | 11 (4.5%) | | |
| 2019-20 | 252 | 270 | 18 (7.1%) | 250 | -2 (0.8%) |
| 2020-21 | | 293 | | 257 | |
| 2021-22 | | 293 | | 259 | |
| 2022-23 | | 297 | | 247 | |
| 2023-24 | | 297 | | 262 | |
| 2024-25 | | 295 | | 261 | |
| 2025-26 | | 284 | | 258 | |
| 2026-27 | | 274 | | 252 | |
| 2027-28 | | 265 | | 247 | |
| 2028-29 | | | | 245 | |

Chamberlin Enrollment

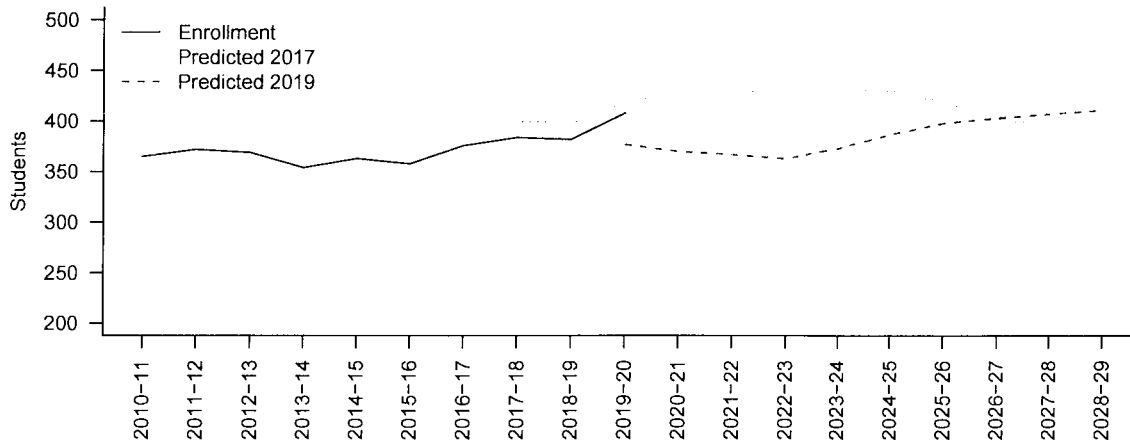


Orchard School

Table 4: Total enrollment compared to predicted enrollment.

| Year | Enrollment | Predicted 2017 | Error | Predicted 2019 | Error |
|---------|------------|----------------|-----------|----------------|------------|
| 2010-11 | 365 | | | | |
| 2011-12 | 372 | | | | |
| 2012-13 | 369 | | | | |
| 2013-14 | 354 | | | | |
| 2014-15 | 363 | | | | |
| 2015-16 | 358 | | | | |
| 2016-17 | 376 | | | | |
| 2017-18 | 384 | 400 | 16 (4.2%) | | |
| 2018-19 | 382 | 397 | 15 (3.9%) | | |
| 2019-20 | 408 | 418 | 10 (2.5%) | 377 | -31 (7.6%) |
| 2020-21 | | 429 | | 370 | |
| 2021-22 | | 428 | | 367 | |
| 2022-23 | | 435 | | 363 | |
| 2023-24 | | 433 | | 373 | |
| 2024-25 | | 431 | | 387 | |
| 2025-26 | | 418 | | 398 | |
| 2026-27 | | 404 | | 403 | |
| 2027-28 | | 393 | | 407 | |
| 2028-29 | | | | 411 | |

Orchard Enrollment



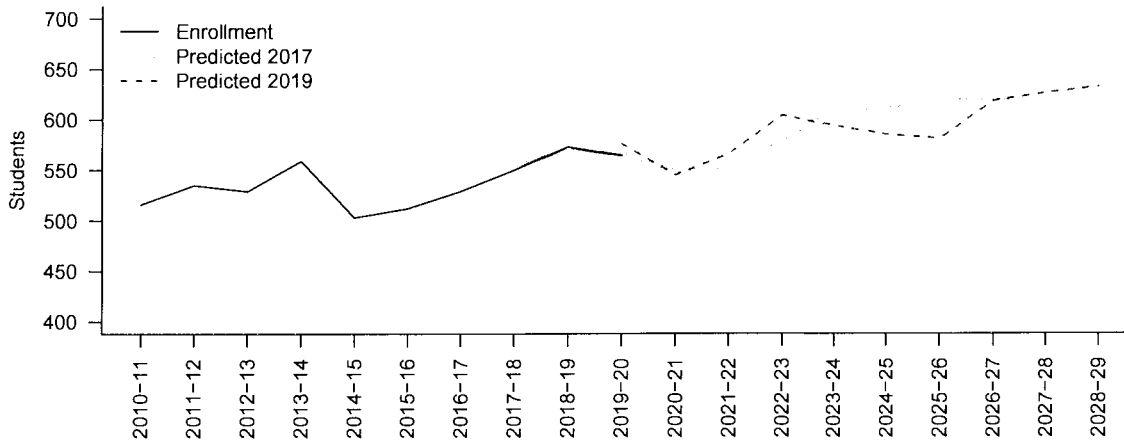
Frederick H. Tuttle Middle School

Enrollment in this figure and table include resident and school choice/tuition students, primarily from Grand Isle Supervisory Union. Tuition enrollment is separated out only for the high school.

Table 5: Total enrollment compared to predicted enrollment.

| Year | Enrollment | Predicted 2017 | Error | Predicted 2019 | Error |
|---------|------------|----------------|-----------|----------------|-----------|
| 2010-11 | 516 | | | | |
| 2011-12 | 535 | | | | |
| 2012-13 | 529 | | | | |
| 2013-14 | 559 | | | | |
| 2014-15 | 503 | | | | |
| 2015-16 | 512 | | | | |
| 2016-17 | 529 | | | | |
| 2017-18 | 550 | 555 | 5 (0.9%) | | |
| 2018-19 | 573 | 569 | -4 (0.7%) | | |
| 2019-20 | 564 | 566 | 2 (0.4%) | 576 | 12 (2.1%) |
| 2020-21 | | 549 | | 545 | |
| 2021-22 | | 550 | | 566 | |
| 2022-23 | | 579 | | 604 | |
| 2023-24 | | 608 | | 594 | |
| 2024-25 | | 611 | | 585 | |
| 2025-26 | | 617 | | 581 | |
| 2026-27 | | 620 | | 618 | |
| 2027-28 | | 613 | | 626 | |
| 2028-29 | | | | 632 | |

FHTMS Enrollment



South Burlington High School

Enrollment in this section breaks out resident and tuition/school choice students. Total enrollment and that of resident students are presented in separate tables.

Table 6: **Total** enrollment compared to predicted total enrollment.

| Year | Total | Predicted 2017 | Error | Predicted 2019 | Error |
|-------------|--------------|-----------------------|--------------|-----------------------|--------------|
| 2010-11 | 881 | | | | |
| 2011-12 | 878 | | | | |
| 2012-13 | 864 | | | | |
| 2013-14 | 874 | | | | |
| 2014-15 | 831 | | | | |
| 2015-16 | 850 | | | | |
| 2016-17 | 887 | | | | |
| 2017-18 | 919 | 942 | 23 (2.5%) | | |
| 2018-19 | 941 | 938 | -3 (0.3%) | | |
| 2019-20 | 919 | 972 | 53 (5.8%) | 932 | 13 (1.4%) |
| 2020-21 | | 959 | | 982 | |
| 2021-22 | | 996 | | 972 | |
| 2022-23 | | 981 | | 989 | |
| 2023-24 | | 978 | | 993 | |
| 2024-25 | | 991 | | 988 | |
| 2025-26 | | 994 | | 1015 | |
| 2026-27 | | 1032 | | 1020 | |
| 2027-28 | | 1070 | | 1043 | |

Table 7: Resident enrollment compared to predicted resident enrollment.

| Year | Residents | Predicted 2017 | Error | Predicted 2019 | Error |
|---------|-----------|----------------|-----------|----------------|-----------|
| 2010-11 | 764 | | | | |
| 2011-12 | 757 | | | | |
| 2012-13 | 741 | | | | |
| 2013-14 | 764 | | | | |
| 2014-15 | 716 | | | | |
| 2015-16 | 713 | | | | |
| 2016-17 | 735 | | | | |
| 2017-18 | 756 | 759 | 3 (0.4%) | | |
| 2018-19 | 756 | 768 | 12 (1.6%) | | |
| 2019-20 | 743 | 782 | 39 (5.2%) | 753 | 10 (1.3%) |
| 2020-21 | | 769 | | 803 | |
| 2021-22 | | 806 | | 793 | |
| 2022-23 | | 791 | | 810 | |
| 2023-24 | | 788 | | 814 | |
| 2024-25 | | 801 | | 809 | |
| 2025-26 | | 804 | | 836 | |
| 2026-27 | | 842 | | 841 | |
| 2027-28 | | 880 | | 864 | |

SBHS Enrollment

